

Formulation	White Traffic Paint	Latex MQ	Synthacril 9000
		Date	17/5/2024
		Volume	100 Gal

#	Raw Material	Quantity (pounds)	Density (pounds/gal)	Volume (Gal)	% W/W
1	Synthacril 9000	433.80	8.88	48.86	31.27%
2	Bentone EW NA	5.00	20.85	0.24	0.36%
3	Multisperse 450	11.00	11.12	0.99	0.79%
4	Disafoam 750	3.50	7.30	0.48	0.25%
5	Huntsman TR 92	100.00	34.21	2.92	7.21%
6	Ammonia (26%)	2.00	7.51	0.27	0.14%
7	Mix for 5 minutes at low speed, verify pH>10.6; use ammonia as needed.				
8	Add the following pigment at high speed into vortex.				
9	Omyacarb 5	725.00	22.50	32.22	52.27%
10	Mix at high speed until fineness > 3H, use water to adjust grind viscosity.				
11	Water	21.00	8.34	2.52	1.51%
12	Ammonia (26%)	4.00	7.51	0.53	0.29%
13	Check pH frequently, pH>10.6; using ammonia as needed.				
14	Turn to low speed and add next items while maintaining > 10.6 pH.				
15	Water	18.16	8.34	2.18	1.31%
16	Disafoam 750	2.00	7.30	0.27	0.14%
17	Methanol	30.00	6.60	4.54	2.16%
18	Nexcoat 795	25.00	7.90	3.16	1.80%
19	Afcona 3580	2.60	9.26	0.28	0.19%
20	Ammonia (26%)	4.00	7.51	0.53	0.29%
21	Final mix at low speed for 5 -10 minutes while maintaining > 10.6 pH.				
22					
23					
TOTAL		1387.06		100.00	100.00%

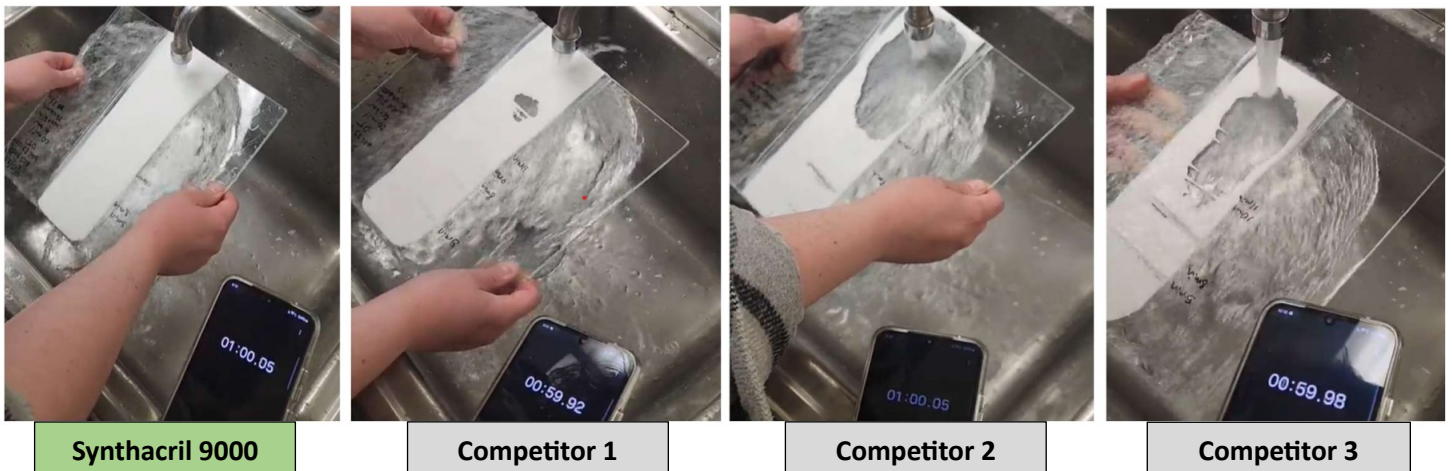
PVC	60.92%
CPVC	69.94%
Factor PVC/CPVC	0.87

Theoretical Properties	
Density (pounds/gal)	13.87
% Solids by Weight	76.41%
% Solids by Volume	59.51%
VOC (g/L)	95.17
Theoretical Yield (m2/gal @ 1 mils)	88.69

Synthacril 9000 had excellent performance during the “Wash Off” and “No Pick-Up Time” tests. Both tests were carried out comparatively using a similar formulation for traffic paint with 3 different latexes from competitors and Synthacril 9000. Applications were made at 15 wet mils and room ambient conditions of T = 22°C and R.H. = 25%.

WATER WASH OFF RESISTANCE

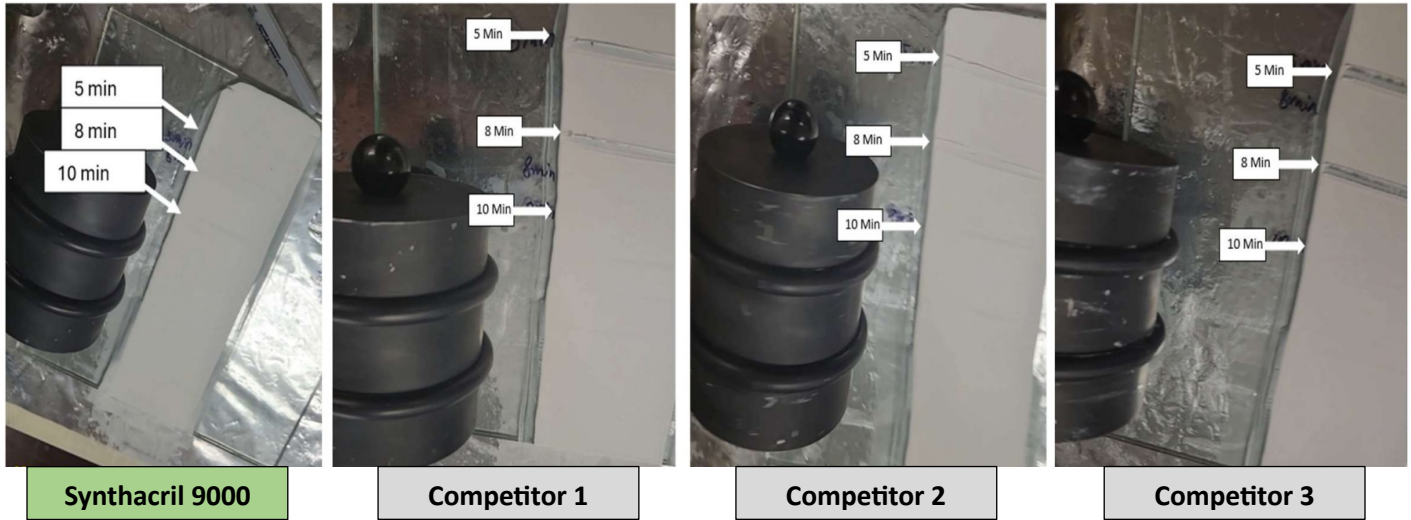
Synthacril 9000 performs very well during water wash off resistance testing. After 1 minute of testing under the same water wash condition, Synthacril 9000 outperform competitor products.



*Test performed after 10 minutes of drying at room ambient conditions.

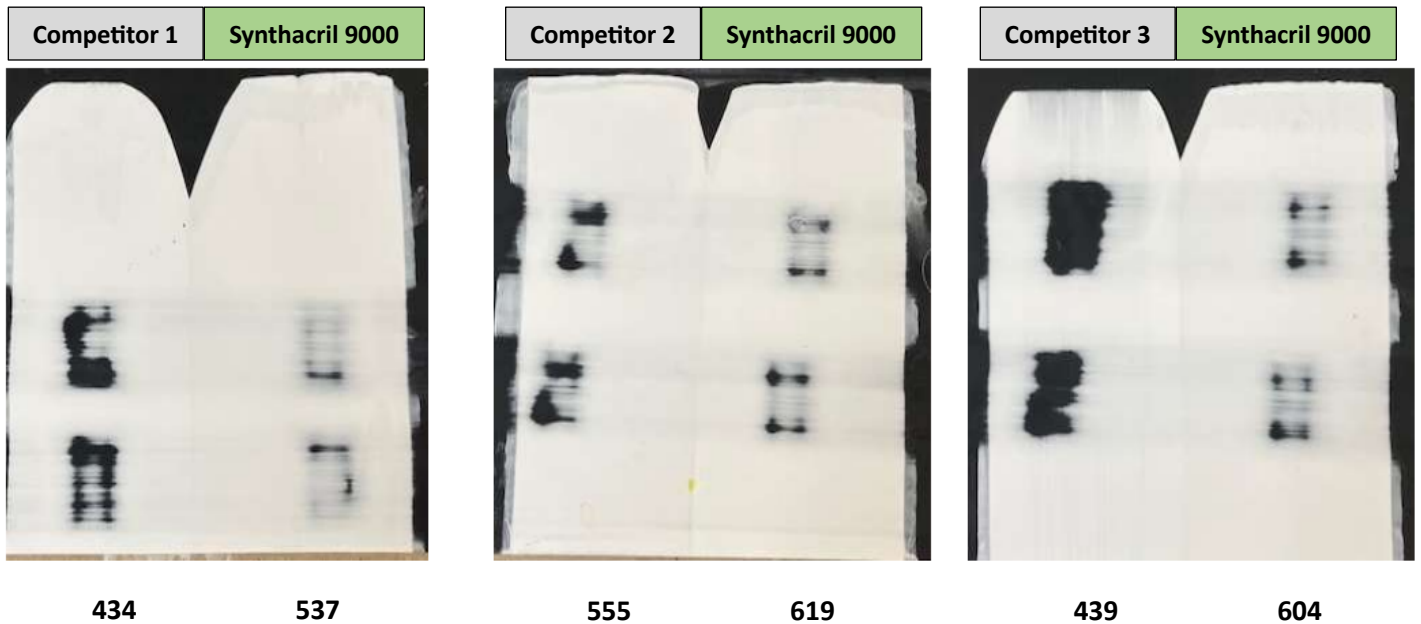
“NO PICK-UP TIME” (ASTM 711)

Synthacril 9000 outperforms competitor materials at 10 minutes without any pick up and film depression.



SCRUB RESISTANCE (ASTM D 2486)

Synthacril 9000 is performing very well when tested against competitor products for latex traffic paint. Synthacril 9000 scrub resistance when tested with ASTM D 2486, turns out to be best vs competitors.



Average Scrub 7 mil wet / 7 Day Room Temperature Cure